

Sixth Prospect Farm Holidays

Staddle Stones Cottage

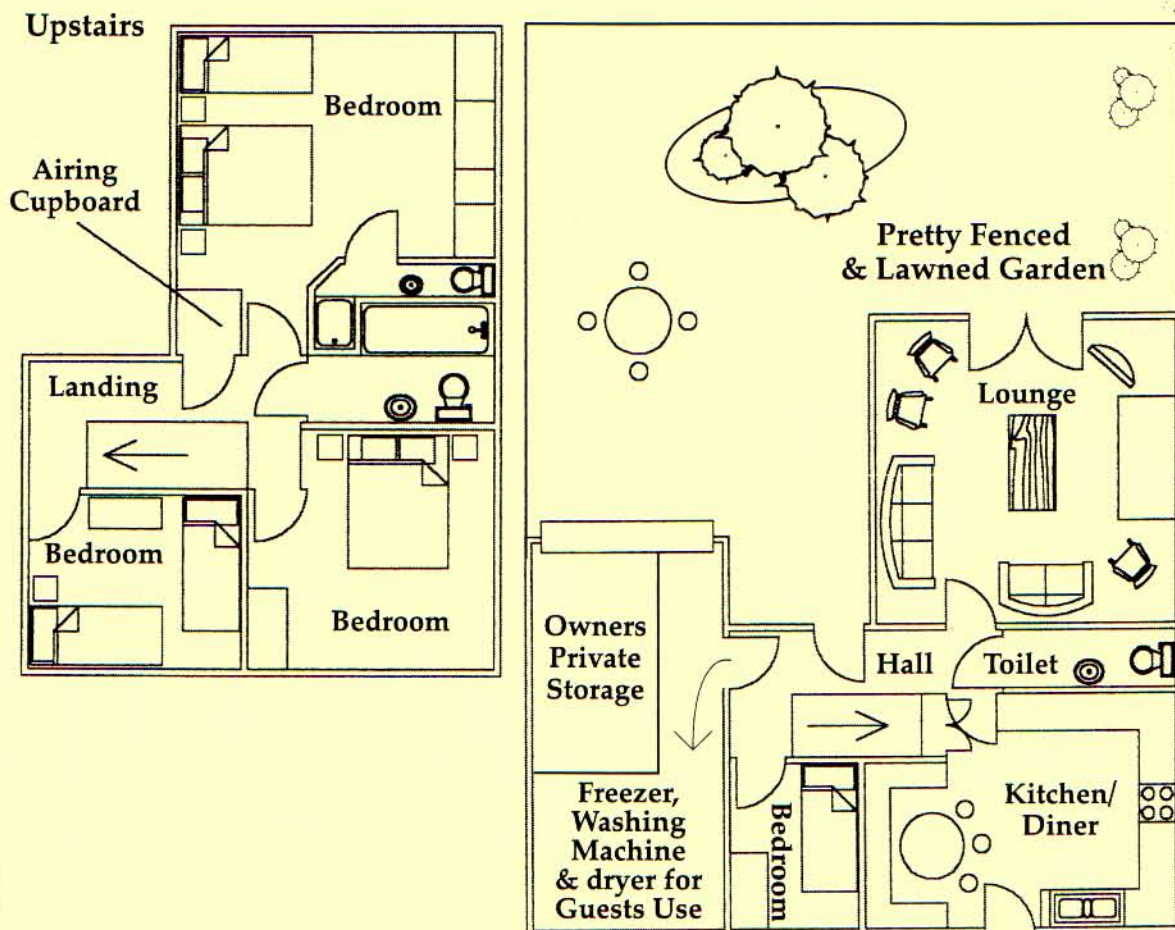


Takes its name from the mushroom shaped stones used to "sit" Grain stores upon. Vital as it was to keep the precious grain vermin-free, farmers since medieval times used stonemasons to hew out Staddle stones. Each Staddle stone was in two parts - the 'stalk' averaged 3ft high and the 'upside down saucer' on top of the 'stalk' prevented rats from scurrying up to the Grain store. The local, suitable stone was carved, in Somerset - 'Hamstone', 'Dulcote' or Mendip stone. See the Staddle stones around Prospect Farm.

Accommodates eight people plus baby.

This superior 4 bedroom detached cottage with private garden boasts quality fittings throughout. There is ample adjacent parking.

The stable door invites one into the fully fitted oak **Kitchen** with combination gas/ electric cooker, dishwasher and microwave and **Dining Alcove** overlooking the goats paddock. Step on over the flagstones to the **Lounge** with brick inglenook fireplace, bread oven and French doors. There are the conveniences of a single **Bedroom** and **Toilet** downstairs. Climb the staircase from the hall to the landing above with an airing cupboard. There are **Three** upstairs **Bedrooms** - the ensuite master bedroom with fitted wardrobes has a 4' 6" double and a single bed can be placed in master bedroom if requested in advance, bedroom 2 is a 4' 6" double, bedroom 3 has two 3' singles. A cot fits into the master bedroom. The **Bathroom** has a shower over the full length bath.



Layout and content of cottage may change due to ongoing improvements